

Updated Characterisation of White Saint-Béat Marble. Discrimination Parameters from Classical Marbles

Royo Plumed, Hernando; Lapeunte, Pilar; Cuchí, José Antonio; Brilli, Mauro; Savin, Marie-Claire

Source / Izvornik: **ASMOSIA XI, Interdisciplinary Studies on Ancient Stone, Proceedings of the XI International Conference of ASMOSIA, 2018, 379 - 389**

Conference paper / Rad u zborniku

Publication status / Verzija rada: **Published version / Objavljena verzija rada (izdavačev PDF)**

<https://doi.org/10.31534/XI.asmosia.2015/02.23>

Permanent link / Trajna poveznica: <https://um.nsk.hr/um:nbn:hr:123:428634>

Rights / Prava: [In copyright](#)/[Zaštićeno autorskim pravom.](#)

Download date / Datum preuzimanja: **2024-10-02**



Repository / Repozitorij:

[FCEAG Repository - Repository of the Faculty of Civil Engineering, Architecture and Geodesy, University of Split](#)



UNIVERSITY OF SPLIT


DIGITALNI AKADEMSKI ARHIVI I REPOZITORIJI



ASMOSIA XI

Interdisciplinary Studies on Ancient Stone

PROCEEDINGS

of the XI ASMOSIA Conference, Split 2015

Edited by Daniela Matetić Poljak and Katja Marasović



Interdisciplinary Studies on Ancient Stone
Proceedings of the XI ASMOSIA Conference (Split 2015)

Publishers:

ARTS ACADEMY IN SPLIT
UNIVERSITY OF SPLIT

and

UNIVERSITY OF SPLIT
FACULTY OF CIVIL ENGINEERING,
ARCHITECTURE AND GEODESY

Technical editor:
Kate Bošković

English language editor:
Graham McMaster

Computer pre-press:
Nikola Križanac

Cover design:
Mladen Čulić

Cover page:

Sigma shaped mensa of pavonazzetto marble from Diocletian's palace in Split

ISBN 978-953-6617-49-4 (Arts Academy in Split)

ISBN 978-953-6116-75-1 (Faculty of Civil Engineering, Architecture and Geodesy)

e-ISBN 978-953-6617-51-7 (Arts Academy in Split)

e-ISBN 978-953-6116-79-9 (Faculty of Civil Engineering, Architecture and Geodesy)

CIP available at the digital catalogue of the University Library in Split, no 170529005

Association for the Study of Marble & Other Stones in Antiquity

ASMOSIA XI

Interdisciplinary Studies of Ancient Stone

Proceedings of the Eleventh International Conference of ASMOSIA,
Split, 18–22 May 2015

Edited by
Daniela Matetić Poljak
Katja Marasović



Split, 2018

Nota bene

All papers are subjected to an international review.

The quality of the images relies on the quality of the originals provided by the authors.

CONTENT

PRESENTATION	15
NECROLOGY: NORMAN HERZ (1923-2013) by Susan Kane	17
1. APPLICATIONS TO SPECIFIC ARCHEOLOGICAL QUESTIONS – USE OF MARBLE	
Hermaphrodites and Sleeping or Reclining Maenads: Production Centres and Quarry Marks <i>Patrizio Pensabene</i>	25
First Remarks about the Pavement of the Newly Discovered Mithraeum of the Colored Marbles at Ostia and New Investigations on Roman and Late Roman White and Colored Marbles from Insula IV, IX <i>Massimiliano David, Stefano Succi and Marcello Turci</i>	33
Alabaster. Quarrying and Trade in the Roman World: Evidence from Pompeii and Herculaneum <i>Simon J. Barker and Simona Perna</i>	45
Recent Work on the Stone at the Villa Arianna and the Villa San Marco (Castellammare di Stabia) and Their Context within the Vesuvian Area <i>Simon J. Barker and J. Clayton Fant</i>	65
Marble Wall Decorations from the Imperial Mausoleum (4 th C.) and the Basilica of San Lorenzo (5 th C.) in Milan: an Update on Colored Marbles in Late Antique Milan <i>Elisabetta Neri, Roberto Bugini and Silvia Gazzoli</i>	79
Sarcophagus Lids Sawn from their Chests <i>Dorothy H. Abramitis and John J. Herrmann</i>	89
The Re-Use of Monolithic Columns in the Invention and Persistence of Roman Architecture <i>Peter D. De Staebler</i>	95
The Trade in Small-Size Statues in the Roman Mediterranean: a Case Study from Alexandria <i>Patrizio Pensabene and Eleonora Gasparini</i>	101
The Marble Dedication of Komon, Son of Asklepiades, from Egypt: Material, Provenance, and Reinforcement of Meaning <i>Patricia A. Butz</i>	109
Multiple Reuse of Imported Marble Pedestals at Caesarea Maritima in Israel <i>Barbara Burrell</i>	117
Iasos and Iasian Marble between the Late Antique and Early Byzantine Eras <i>Diego Peirano</i>	123

Thassos, Known Inscriptions with New Data <i>Tony Kozelj and Manuela Wurch-Kozelj</i>	131
The Value of Marble in Roman <i>Hispalis</i> : Contextual, Typological and Lithological Analysis of an Assemblage of Large Architectural Elements Recovered at N° 17 Goyeneta Street (Seville, Spain) <i>Ruth Taylor, Oliva Rodríguez, Esther Ontiveros, María Luisa Loza, José Beltrán and Araceli Rodríguez</i>	143
<i>Giallo Antico</i> in Context. Distribution, Use and Commercial Actors According to New Stratigraphic Data from the Western Mediterranean (2 nd C. Bc – Late 1 st C. Ad) <i>Stefan Ardeleanu</i>	155
<i>Amethystus</i> : Ancient Properties and Iconographic Selection <i>Luigi Pedroni</i>	167
2. PROVENANCE IDENTIFICATION I: (MARBLE)	
Unraveling the Carrara – Göktepe Entanglement <i>Walter Prochaska, Donato Attanasio and Matthias Bruno</i>	175
The Marble of Roman Imperial Portraits <i>Donato Attanasio, Matthias Bruno, Walter Prochaska and Ali Bahadır Yavuz</i>	185
Tracing Alabaster (Gypsum or Anhydrite) Artwork Using Trace Element Analysis and a Multi-Isotope Approach (Sr, S, O) <i>Lise Leroux, Wolfram Kloppmann, Philippe Bromblet, Catherine Guerrot, Anthony H. Cooper, Pierre-Yves Le Pogam, Dominique Vingtain and Noel Worley</i>	195
Roman Monolithic Fountains and Thasian Marble <i>Annewies van den Hoek, Donato Attanasio and John J. Herrmann</i>	207
Archaeometric Analysis of the Alabaster Thresholds of Villa A, Oplontis (Torre Annunziata, Italy) and New Sr and Pb Isotopic Data for <i>Alabastro Ghiaccione del Circeo</i> <i>Simon J. Barker, Simona Perna, J. Clayton Fant, Lorenzo Lazzarini and Igor M. Villa</i>	215
Roman Villas of Lake Garda and the Occurrence of Coloured Marbles in the Western Part of “Regio X Venetia et Histria” (Northern Italy) <i>Roberto Bugini, Luisa Folli and Elisabetta Roffia</i>	231
Calcitic Marble from Thasos in the North Adriatic Basin: Ravenna, Aquileia, and Milan <i>John J. Herrmann, Robert H. Tykot and Annewies van den Hoek</i>	239
Characterisation of White Marble Objects from the Temple of Apollo and the House of Augustus (Palatine Hill, Rome) <i>Francesca Giustini, Mauro Brilli, Enrico Gallochio and Patrizio Pensabene</i>	247
Study and Archeometric Analysis of the Marble Elements Found in the Roman Theater at Aeclanum (Mirabella Eclano, Avellino - Italy) <i>Antonio Mesisca, Lorenzo Lazzarini, Stefano Cancelliere and Monica Salvadori</i>	255

Two Imperial Monuments in Puteoli: Use of Proconnesian Marble in the Domitianic and Trajanic Periods in Campania <i>Irene Bald Romano, Hans Rupprecht Goette, Donato Attanasio and Walter Prochaska</i>	267
Coloured Marbles in the Neapolitan Pavements (16 th And 17 th Centuries): the Church of <i>Santi Severino e Sossio</i> <i>Roberto Bugini, Luisa Folli and Martino Solito</i>	275
Roman and Early Byzantine Sarcophagi of Calcitic Marble from Thasos in Italy: Ostia and Siracusa <i>Donato Attanasio, John J. Herrmann, Robert H. Tykot and Annewies van den Hoek</i>	281
Revisiting the Origin and Destination of the Late Antique Marzamemi 'Church Wreck' Cargo <i>Justin Leidwanger, Scott H. Pike and Andrew Donnelly</i>	291
The Marbles of the Sculptures of Felix Romuliana in Serbia <i>Walter Prochaska and Maja Živić</i>	301
Calcitic Marble from Thasos and Proconnesos in Nea Anchialos (Thessaly) and Thessaloniki (Macedonia) <i>Vincent Barbin, John J. Herrmann, Aristotle Mentzos and Annewies van den Hoek</i>	311
Architectural Decoration of the Imperial Agora's Porticoes at Iasos <i>Fulvia Bianchi, Donato Attanasio and Walter Prochaska</i>	321
The Winged Victory of Samothrace - New Data on the Different Marbles Used for the Monument from the Sanctuary of the Great Gods <i>Annie Blanc, Philippe Blanc and Ludovic Laugier</i>	331
Polychrome Marbles from the Theatre of the Sanctuary of Apollo Pythios in Gortyna (Crete) <i>Jacopo Bonetto, Nicolò Mareso and Michele Bueno</i>	337
Paul the Silentary, Hagia Sophia, Onyx, Lydia, and Breccia Corallina <i>John J. Herrmann and Annewies van den Hoek</i>	345
Incrustations from Colonia Ulpia Traiana (Near Modern Xanten, Germany) <i>Vilma Ruppinić and Ulrich Schüssler</i>	351
Stone Objects from Vindobona (Austria) – Petrological Characterization and Provenance of Local Stone in a Historico-Economical Setting <i>Andreas Rohatsch, Michaela Kronberger, Sophie Insulander, Martin Mosser and Barbara Hodits</i>	363
Marbles Discovered on the Site of the Forum of Vaison-la-Romaine (Vaucluse, France): Preliminary Results <i>Elsa Roux, Jean-Marc Mignon, Philippe Blanc and Annie Blanc</i>	373
Updated Characterisation of White Saint-Béat Marble. Discrimination Parameters from Classical Marbles <i>Hernando Royo Plumed, Pilar Lapeunte, José Antonio Cuchí, Mauro Brillì and Marie-Claire Savin</i>	379

Grey and Greyish Banded Marbles from the Estremoz Anticline in Lusitania <i>Pilar Lapuente, Trinidad Nogales-Basarrate, Hernando Royo Plumed, Mauro Brilli and Marie-Claire Savin</i>	391
New Data on Spanish Marbles: the Case of <i>Gallaecia</i> (NW Spain) <i>Anna Gutiérrez García-M., Hernando Royo Plumed and Silvia González Soutelo</i>	401
A New Roman Imperial Relief Said to Be from Southern Spain: Problems of Style, Iconography, and Marble Type in Determining Provenance <i>John Pollini, Pilar Lapuente, Trinidad Nogales-Basarrate and Jerry Podany</i>	413
Reuse of the <i>Marmora</i> from the Late Roman Palatial Building at Carranque (Toledo, Spain) in the Visigothic Necropolis <i>Virginia García-Entero, Anna Gutiérrez García-M. and Sergio Vidal Álvarez</i>	427
Imperial Porphyry in Roman Britain <i>David F. Williams</i>	435
Recycling of Marble: Apollonia/Sozousa/Arsuf (Israel) as a Case Study <i>Moshe Fischer, Dimitris Tambakopoulos and Yannis Maniatis</i>	443
Thasian Connections Overseas: Sculpture in the Cyrene Museum (Libya) Made of Dolomitic Marble from Thasos <i>John J. Herrmann and Donato Attanasio</i>	457
Marble on Rome's Southwestern Frontier: Thamugadi and Lambaesis <i>Robert H. Tykot, Ouahiba Bouzidi, John J. Herrmann and Annewies van den Hoek</i>	467
Marble and Sculpture at Lepcis Magna (Tripolitania, Libya): a Preliminary Study Concerning Origin and Workshops <i>Luisa Musso, Laura Buccino, Matthias Bruno, Donato Attanasio and Walter Prochaska</i>	481
The Pentelic Marble in the Carnegie Museum of Art Hall of Sculpture, Pittsburgh, Pennsylvania <i>Albert D. Kollar</i>	491
Analysis of Classical Marble Sculptures in the Michael C. Carlos Museum, Emory University, Atlanta <i>Robert H. Tykot, John J. Herrmann, Renée Stein, Jasper Gaunt, Susan Blevins and Anne R. Skinner</i>	501
3. PROVENANCE IDENTIFICATION II: (OTHER STONES)	
Aphrodisias and the Regional Marble Trade. The <i>Scaenae Frons</i> of the Theatre at Nysa <i>Natalia Toma</i>	513
The Stones of Felix Romuliana (Gamzigrad, Serbia) <i>Bojan Djurić, Divna Jovanović, Stefan Pop Lazić and Walter Prochaska</i>	523
Aspects of Characterisation of Stone Monuments from Southern Pannonia <i>Branka Migotti</i>	537

The Budakalász Travertine Production <i>Bojan Djurić, Sándor Kele and Igor Rižnar</i>	545
Stone Monuments from Carnuntum and Surrounding Areas (Austria) – Petrological Characterization and Quarry Location in a Historical Context <i>Gabrielle Kremer, Isabella Kitz, Beatrix Moshhammer, Maria Heinrich and Erich Draganits</i>	557
Espejón Limestone and Conglomerate (Soria, Spain): Archaeometric Characterization, Quarrying and Use in Roman Times <i>Virginia García-Entero, Anna Gutiérrez García-M, Sergio Vidal Álvarez, María J. Peréx Agorreta and Eva Zarco Martínez</i>	567
The Use of Alcover Stone in Roman Times (<i>Tarraco, Hispania Citerior</i>). Contributions to the <i>Officina Lapidaria Tarraconensis</i> <i>Diana Gorostidi Pi, Jordi López Vilar and Anna Gutiérrez García-M.</i>	577
4. ADVANCES IN PROVENANCE TECHNIQUES, METHODOLOGIES AND DATABASES	
Grainautline – a Supervised Grain Boundary Extraction Tool Supported by Image Processing and Pattern Recognition <i>Kristóf Csorba, Lilla Barancsuk, Balázs Székely and Judit Zöldföldi</i>	587
A Database and GIS Project about Quarrying, Circulation and Use of Stone During the Roman Age in <i>Regio X - Venetia et Histria</i> . The Case Study of the Euganean Trachyte <i>Caterine Previato and Arturo Zara</i>	597
5. QUARRIES AND GEOLOGY	
The Distribution of Troad Granite Columns as Evidence for Reconstructing the Management of Their Production <i>Patrizio Pensabene, Javier Á. Domingo and Isabel Rodà</i>	613
Ancient Quarries and Stonemasonry in Northern Choria Considiana <i>Hale Güney</i>	621
Polychromy in Larisaeon Quarries and its Relation to Architectural Conception <i>Gizem Mater and Ertunç Denктаş</i>	633
Euromos of Caria: the Origin of an Hitherto Unknown Grey Veined Stepped Marble of Roman Antiquity <i>Matthias Bruno, Donato Attanasio, Walter Prochaska and Ali Bahadır Yavuz</i>	639
Unknown Painted Quarry Inscriptions from Bacakale at <i>Docimium</i> (Turkey) <i>Matthias Bruno</i>	651
The Green Schist Marble Stone of Jebel El Hairech (North West of Tunisia): a Multi-Analytical Approach and its Uses in Antiquity <i>Ameur Younès, Mohamed Gaied and Wissem Gallala</i>	659
Building Materials and the Ancient Quarries at <i>Thamugadi</i> (East of Algeria), Case Study: Sandstone and Limestone <i>Younès Rezkallah and Ramdane Marmi</i>	673

The Local Quarries of the Ancient Roman City of <i>Valeria</i> (Cuenca, Spain) <i>Javier Atienza Fuente</i>	683
The Stone and Ancient Quarries of Montjuïc Mountain (Barcelona, Spain) <i>Aureli Álvarez</i>	693
<i>Notae Lapidinarum</i> : Preliminary Considerations about the Quarry Marks from the Provincial Forum of <i>Tarraco</i> <i>Maria Serena Vinci</i>	699
The Different Steps of the Rough-Hewing on a Monumental Sculpture at the Greek Archaic Period: the Unfinished Kouros of Thasos <i>Danièle Braunstein</i>	711
A Review of Copying Techniques in Greco-Roman Sculpture <i>Séverine Moureaud</i>	717
Labour Forces at Imperial Quarries <i>Ben Russell</i>	733
Social Position of Craftsmen inside the Stone and Marble Processing Trades in the Light of Diocletian's Edict on Prices <i>Krešimir Bosnić and Branko Matulić</i>	741
6. STONE PROPERTIES, WEATHERING EFFECTS AND RESTORATION, AS RELATED TO DIAGNOSIS PROBLEMS, MATCHING OF STONE FRAGMENTS AND AUTHENTICITY	
Methods of Consolidation and Protection of Pentelic Marble <i>Maria Apostolopoulou, Elissavet Drakopoulou, Maria Karoglou and Asterios Bakolas</i>	749
7. PIGMENTS AND PAINTINGS ON MARBLE	
Painting and Sculpture Conservation in Two Gallo-Roman Temples in Picardy (France): Champlieu and Pont-Sainte-Maxence <i>Véronique Brunet-Gaston and Christophe Gaston</i>	763
The Use of Colour on Roman Marble Sarcophagi <i>Eliana Siotto</i>	773
New Evidence for Ancient Gilding and Historic Restorations on a Portrait of Antinous in the San Antonio Museum of Art <i>Jessica Powers, Mark Abbe, Michelle Bushey and Scott H. Pike</i>	783
Schists and Pigments from Ancient Swat (Khyber Pukhtunkhwa, Pakistan) <i>Francesco Mariottini, Gianluca Vignaroli, Maurizio Mariottini and Mauro Roma</i>	793
8. SPECIAL THEME SESSION: „THE USE OF MARBLE AND LIMESTONE IN THE ADRIATIC BASIN IN ANTIQUITY”	
Marble Sarcophagi of Roman Dalmatia Material – Provenance – Workmanship <i>Guntram Koch</i>	809

Funerary Monuments and Quarry Management in Middle Dalmatia <i>Nenad Cambi</i>	827
Marble Revetments of Diocletian's Palace <i>Katja Marasović and Vinka Marinković</i>	839
The Use of Limestones as Construction Materials for the Mosaics of Diocletian's Palace <i>Branko Matulić, Domagoj Mudronja and Krešimir Bosnić</i>	855
Restoration of the Peristyle of Diocletian's Palace in Split <i>Goran Nikšić</i>	863
Marble Slabs Used at the Archaeological Site of Sorna near Poreč Istria – Croatia <i>Đeni Gobić-Bravar</i>	871
Ancient Marbles from the Villa in Verige Bay, Brijuni Island, Croatia <i>Mira Pavletić and Đeni Gobić-Bravar</i>	879
Notes on Early Christian Ambos and Altars in the Light of some Fragments from the Islands of Pag and Rab <i>Mirja Jarak</i>	887
The Marbles in the Chapel of the Blessed John of Trogir in the Cathedral of St. Lawrence at Trogir <i>Đeni Gobić-Bravar and Daniela Matetić Poljak</i>	899
The Use of Limestone in the Roman Province of Dalmatia <i>Edisa Lozić and Igor Rižnar</i>	915
The Extraction and Use of Limestone in Istria in Antiquity <i>Klara Buršić-Matijašić and Robert Matijašić</i>	925
Aurisina Limestone in the Roman Age: from Karst Quarries to the Cities of the Adriatic Basin <i>Caterina Previato</i>	933
The Remains of Infrastructural Facilities of the Ancient Quarries on Zadar Islands (Croatia) <i>Mate Parica</i>	941
The Impact of Local Geomorphological and Geological Features of the Area for the Construction of the Burnum Amphitheatre <i>Miroslav Glavičić and Uroš Stepišnik</i>	951
Roman Quarry Klis Kosa near Salona <i>Ivan Alduk</i>	957
Marmore Lavdata Brattia <i>Miona Miliša and Vinka Marinković</i>	963
Quarries of the Lumbarda Archipelago <i>Ivka Lipanović and Vinka Marinković</i>	979

Island of Korčula – Importer and Exporter of Stone in Antiquity <i>Mate Parica and Igor Borzić</i>	985
Faux Marbling Motifs in Early Christian Frescoes in Central and South Dalmatia: Preliminary Report <i>Tonči Borovac, Antonija Gluhan and Nikola Radošević</i>	995
INDEX OF AUTHORS	1009

UPDATED CHARACTERISATION OF WHITE SAINT-BÉAT MARBLE. DISCRIMINATION PARAMETERS FROM CLASSICAL MARBLES

Hernando Royo Plumed¹, Pilar Lapuente^{1,2}, José Antonio Cuchi³, Mauro Brilli⁴ and Marie-Claire Savin⁵

¹Institut Català d'Arqueologia Clàssica (ICAC), Tarragona, Spain (hroyo@icac.cat; plapuent@unizar.es)

²Petrology and Geochemistry, Earth Sciences Department, Zaragoza University, Zaragoza, Spain (plapuent@unizar.es)

³Escuela Politécnica Superior, Universidad de Zaragoza (UNIZAR), Huesca, Spain (cuchi@unizar.es)

⁴Istituto di Geologia Ambientale e Geoingegneria, CNR, Area della Ricerca Roma1, Rome, Italy (mauro.brilli@igag.cnr.it)

⁵Institut de recherche sur les Archéomatériaux – Centre de Recherche en Physique Appliquée à l'Archéologie (IRAMAT-CRP2A), Université de Bordeaux Montaigne, Bordeaux, France (marie-claire.savin@u-bordeaux-montaigne.fr)

Abstract

Saint-Béat marble (Central French Pyrenees) is considered one of the most famous Roman Gaul marbles by archaeomaterials researchers. White, grey and banded greyish varieties were exploited during Roman times, to be used mainly in sculpture (including sarcophagi), decorative architecture and epigraphy, primarily in Southern Gaul, but they were also distributed beyond the Hispanic border. A multi-method approach combining petrography, spectrophotometry, cathodoluminescence with EDX spectroscopy and stable C and O isotope analysis was applied to a new collection of samples from quarries along both banks of the Garonne River, next to Saint-Béat village. This work aims to highlight the most useful parameters to discriminate one of the Saint-Béat marble varieties (the coarse-grained white), from other Classical and Hispanic marbles of similar features. This updated characterisation has been successfully checked with Roman artefacts from different archaeological sites of the *Hispania Tarraconensis* Province.

Keywords

Pyrenean marble, petrological parameters, isotopic analysis

Saint-Béat marble. Archaeological and geological setting

Saint-Béat marble is one of the French ornamental stones exploited by the Romans and widely employed in Gaul. The quarries are located along both banks of the Garonne River near the village of Saint-Béat (Saint-Gaudens Arrondissement), in the Central French Pyrenees (Department of Haute-Garonne, Occitanie) and are well connected to the Atlantic Ocean by the large valley of the Garonne River.

Although some authors studied this before for the purpose of archaeometric application (COSTEDOAT 1992, 1995; BLANC 1995), they focused on the differentiation of numerous quarry fronts, the main purpose being to identify from which of them were extracted the marbles found in Roman artefacts from regional archaeological sites. In contrast, the present paper aims to highlight which parameters are the most useful for the discrimination of the coarse-grained white variety of Saint-Béat marble from similar Classical and Hispanic marbles¹.

This approach is crucial in order to check its Roman use outside of Gaul, and in particular on the Hispanic side of the Pyrenees. When the focus was on the Ebro Valley (ancient *Conventus Caesaraugustanus*, of the *Hispania Tarraconensis* Roman Province), its presence was not thoroughly checked. An initial archaeometric study of architectural and sculptural pieces from the Roman Theatre of *Caesar Augusta* revealed the use of Saint-Béat marble, but also some uncertainties as a set of samples of problematic Pyrenean origin (LAPUENTE, TURI, BLANC 2009). This was mainly caused by the lack of petrographic and isotopic data from French Pyrenean marble districts. Furthermore identification of marble of this type in marble artefacts found in Hispanic territories is a difficult task because the favourable geographical location of the Ebro Valley, open to the Mediterranean, enabled the entrance of Classical marbles from all around the Empire. Additionally, the Hispanic marble from the Estremoz Anticline district has been recently identified in *Caesar Augusta* in a portrait of Tiberius (LAPUENTE *et al.* 2016; NOGALES, LAPUENTE, RODÀ 2017).

¹ Which is part of the Ph. D thesis recently defended by H. Royo at Zaragoza University (Spain), aiming to update the characterisation of the Pyrenean marble quarries from an exclusively archaeometric standpoint (ROYO PLUMED 2016).

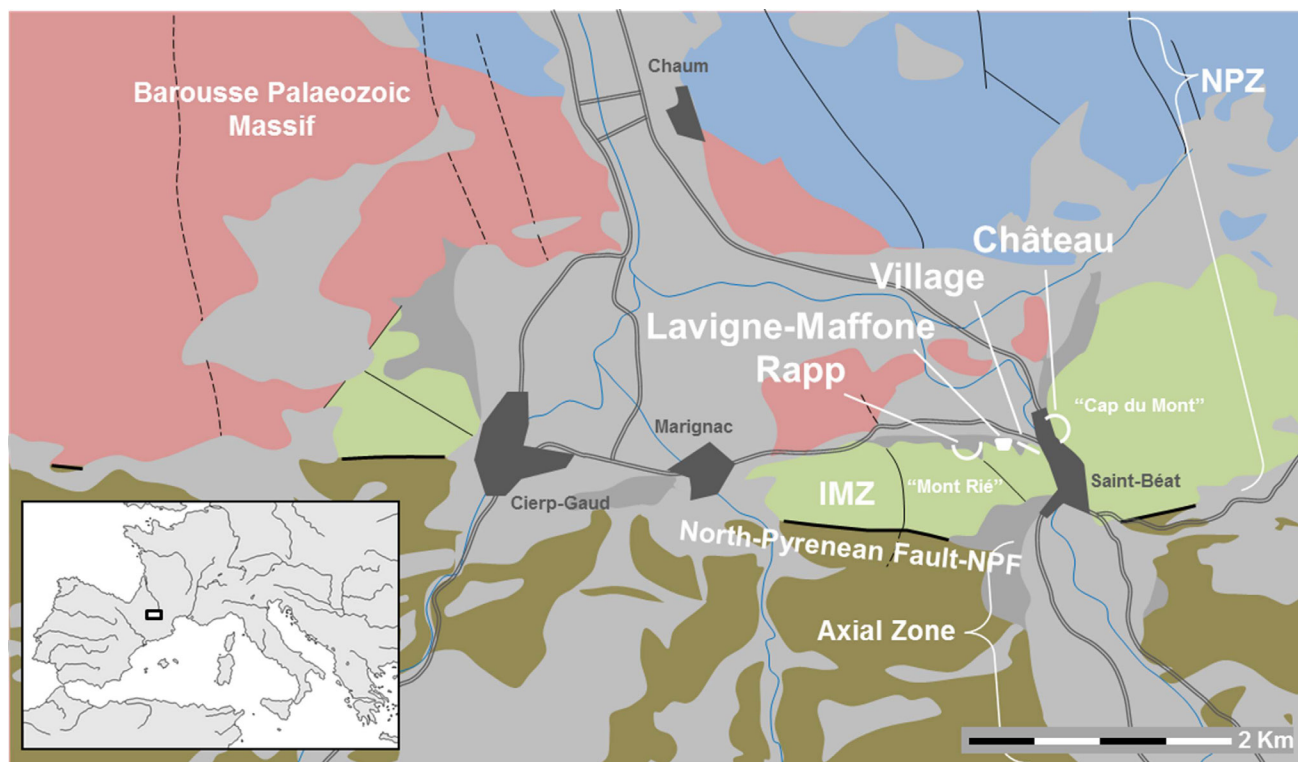


Fig. 1. Saint-Béat quarries location on a simplified geological map of the area (Carte géologique détaillée de la France à 1/50000 1072-Arreau (BRGM-SGN) modified). Pink: Barousse Palaeozoic Massif (Cambro-Ordovician). Dark green: Palaeozoic Axial Zone (Ordovician-Devonian). Blue: NPZ (non-metamorphic Mesozoic). Light green: IMZ-NPZ (undifferentiated Mesozoic). Grey and light grey: Quaternary

Therefore, the provenance study of Roman marble artefacts found in this territory required a clear distinction between Classical, Hispanic and French Pyrenean marbles.

An additional argument for making its discrimination parameters better known is because other Pyrenean marbles were also exploited near or within the area where Saint-Béat marble was distributed. This was the case dealt with in a previous paper (ROYO *et al.* 2015) where a comparative study of marbles from Arties quarry, located about 40km south of Saint-Béat, was carried out in order to identify both materials in different Roman archaeological pieces found in the Aran Valley (Spain).

From the geological point of view, Saint-Béat marble is part of certain carbonate series of Jurassic-Lower Albian age, affected by HT/LP (high temperature/low pressure) metamorphism of Cretaceous Upper Albian times. In addition to this so-called Pyrenean metamorphism, an intense penetrative deformation was developed as the result of several Alpine tectonic phases, responsible for the lifting of the Pyrenees. These undifferentiated carbonate series form the most important outcrops of Pyrenean marble located in the Internal Metamorphic Zone (IMZ) which intermittently outcrops in the south of the North Pyrenean Zone (NPZ), and is particularly well developed in its southern central part. The NPZ and IMZ, when exposed, are both bounded to the south by

the North Pyrenean Fault (NPF) (Fig. 1), the particular geological history of which has a high influence on the observed macro and microstructure features.

With large and massive layers, more or less homogeneous, mostly of grey and greyish banded but also white marbles, the marble outcrops are situated on both banks of the narrow gorge opened by the Garonne River. Several quarries with their respective fronts became well known after studies published two decades ago (COSTEDOAT 1992, 1995). Their easy access to the river facilitated their distribution along the Garonne Valley. In the present paper, marbles from the Cap du Mont (right bank) were sampled inside and outside the Château quarry, while on the left bank (Mont Rié), marbles were collected outside the so-called Lavigne-Maffone underground quarries, in the Rapp quarry and in the outcrop next to the village (Fig. 1). Unfortunately, the important quarrying activity in the Saint-Béat district over the centuries has destroyed any vestige of ancient working (BESSAC, SABLAYROLLES 2002). The most ancient part of white marble extraction of Roman date is located at the top of the current front of Rapp, in Mont Rié (BLANC, BLANC 2012). In 1946, a landslide led to the discovery of a late 1st century BC front that was reused as a Gallo-Roman sanctuary during the 2nd century AD and where many small *arae* were also found.

The site, known as Mailh d'Éras Higouras, was destroyed shortly after it was sighted as a result of another landslide due to ongoing exploitation works (SAPÈNE 1946; FABRE, SABLAYROLLES 1995).

Different varieties of marbles are currently extracted from this district: white, bluish-white, grey, grey regular and irregular banded marbles, all of which were exploited by the Romans, mainly from the 1st to the 2nd century AD. Most of the Saint-Béat marbles are purely calcite. Some marbles with less than 50% in dolomite are in other quarries of the region (Boutx and Sost) whose Roman age has not been verified. Additionally, a dolomitic front (100% dolomite) close to the ancient quarry of the “Brèche des Romains” (La Pène-Saint-Martin), between Saint-Béat and Lez villages, was thought to be the site of ancient exploitation (GISBERT, GASPARD 2004)². A recent general study (ROYO PLUMED 2016) visually identified several lithotypes by their macroscopic features; only the coarse-grained white is considered in the present study³.

Analytical methodology

Petrography, spectrophotometry, cathodoluminescence (CL) and carbon and oxygen stable isotope ratio determination ($\delta^{13}\text{C}$ and $\delta^{18}\text{O}$) were carried out using a sequential approach. This combined method allows discrimination among different quarries, useful when the isotopic ratios overlap. Petrography is always the first step to understand the geological history and formation processes better. It has been systematically applied for studying the macroscopic and microscopic features of these marbles.

The relative grain size of the principal mineral components and main colour was registered by the naked eye. The colourimetric parameters were measured with a portable Minolta spectrophotometer in association with SpectraMagic NX 2.5 software⁴. This equipment enables the measurement of the grey-to-white scale with their CIELAB colour space parameters⁵, complementing the

colour data visually recorded. All these features make it possible to perform a first subdivision of the marbles.

Uncovered thin sections of each sample⁶ were observed under a Nikon Eclipse 50iPOL Polarising Light Microscope (PLM). A set of mineralogical and textural parameters with a diagnostic significance for marble discrimination were measured (LAZZARINI *et al.* 1980; GORGONI *et al.* 2002). Special attention was paid to grain size, measuring the maximum grain size (MGS), and fabric, with the grain boundary shape (GBS). Additional features were observed with a deformation degree experiment based on calcite twin morphology (FERRILL *et al.* 2004) and the identification of intra-crystalline deformation microstructures. In addition, the main mineralogical composition (calcite and/or dolomite)⁷ and the presence of accessory minerals were determined. Their optical recognition was supplemented through the application, point-by-point, of a chemical microanalysis energy dispersive X-ray spectroscopy (EDX), using an Amptek MCA 8000 X-ray detector added to the CL8200 Mk5 equipment. This equipment is also suitable to CL analysis and made possible the observation of the luminescent capacity of certain minerals, particularly from carbonates. The electron energy applied to the thin sections was 15-20 kV and the beam current was operated at 250-300 μA . CL Colour, intensity and distribution patterns were recorded taking digital photographs using an automatic digital Nikon Coolpix 5400 camera. This CL methodology has been applied to Classical and Hispanic marbles (BARBIN *et al.* 1989, 1992; LAPUENTE, TURI, BLANC 2000; LAPUENTE *et al.* 2014). Carbon and oxygen stable isotope signatures were measured on calcite marble samples with an isotope ratio mass spectrometer (IRMS) Finnigan MAT252 according to MC CREA (1950). The results were expressed in terms of the usual delta notation $\delta^{13}\text{C}$ and $\delta^{18}\text{O}$ in ‰ relative to the International Reference Standard PDB (Pee Dee Belemnite).

As one experimental method, the use of a spectrophotometer has been checked to be applied in specific problematic cases of discrimination, in order to check the existence of different colour parameters. To minimise the possible effects due to the state of the surface, all samples were prepared with a flat unpolished surface, at least 2 cm thick, to avoid any rough irregularity.

2 However, this dolomitic marble quarry was opened in the fifties of the last century by the OMG society (“Onyx et Marbres Granules”) after a personal communication by the administrative quarry staff.

3 An additional paper is being prepared with all marble varieties from the Haute-Garonne Valley.

4 The measurements conditions are explained in detail in another article (see LAPUENTE *et al.* in this volume).

5 The three coordinates of CIELAB colour space represent the lightness of the colour (L^*), its position between red/magenta and green (a^*) and its position between yellow and blue (b^*).

6 Prepared at the laboratory of “Preparación de Rocas y Materiales Duros”, (Zaragoza University). The authors would like to acknowledge the use of this “Servicio General de Apoyo a la Investigación-SAI”.

7 By staining with Alizarin Red S stain.

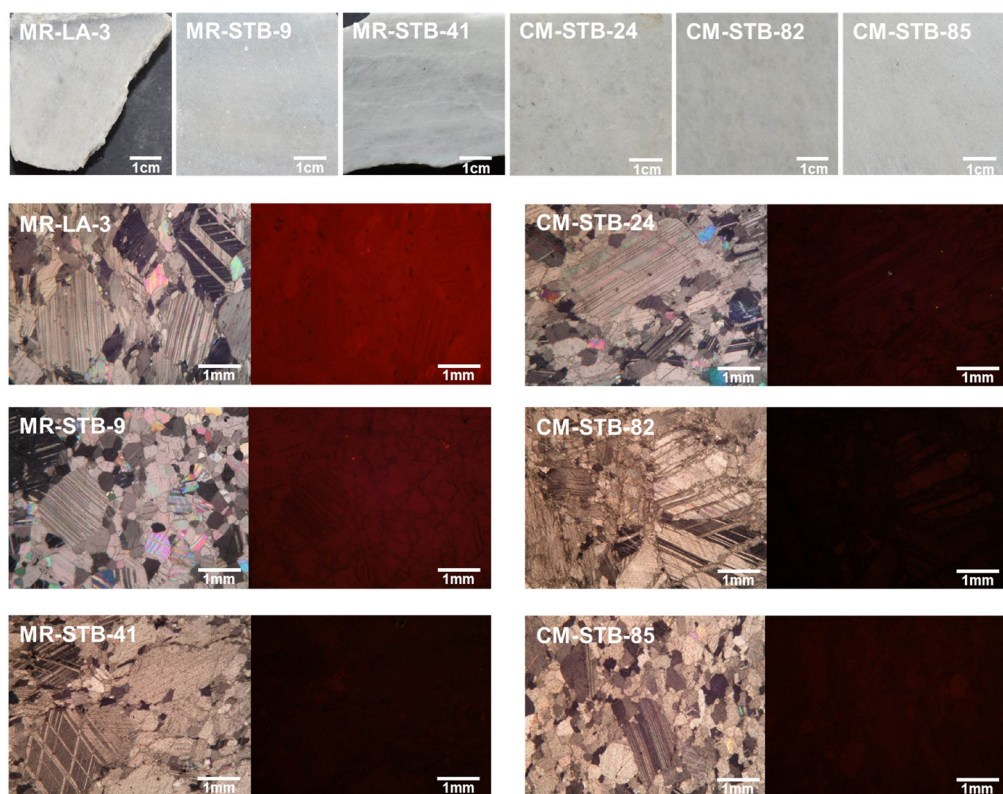


Fig. 2. Selection of samples taken as reference of the coarse-grained white marble of Saint-Béat (MR: Mont Rié quarry-fronts samples. CM: Cap du Mont quarry-front samples). Visual appearance (above) in which the light greyish white tone is evident, and pairs of photomicrographs with cross polarised light (left) and cathodoluminescence pattern (right)

Analytical results: characterisation of the coarse-grained white Saint-Béat marble

The studied reference set of coarse-grained white marble of Saint-Béat comprises fifteen samples. In agreement with their visual colour, they all show a light greyish-white hue, whose measurements using the spectrophotometer present a value range from 75.4 to 86.2 for lightness index (L^*) and from 56.0 to 69.0 for whiteness index (WI). The inequigranular calcite, easy to recognise by the naked eye, is the manifestation of their microscopic “core-and-mantle” structure⁸. Visually, the larger grains are usually evidenced by a lower lightness of greyish-white colour, with an appearance colloquially referred to as “rice grain” texture (a feature which is also common in the grey and banded Saint-Béat varieties).

All samples are calcite marbles⁹ but rarely present less than 5% in dolomite, determined by staining

(Alizarin Red S) and EDX analyses. As common accessory minerals, there are isolated crystals of quartz, phengitic muscovite and pyrite. Additionally, some aggregates of graphite and rare idiomorphic crystals of calcium-rich scapolite (meionite) are sporadically present. As a marble with a light greyish-white hue, the existence of graphite aggregates is quite diagnostic along with the presence of meionite. This type of scapolite is especially diagnostic in the grey banded Saint-Béat marbles, in which it becomes a subordinate mineral.

This coarse-grained white Saint-Béat variety presents an isotropic fabric, but depending on the sample orientation it can exhibit a slightly anisotropic fabric, marked by a dimensional preferred orientation. The heteroblastic texture is quite distinctive with a remarkable difference in the grain size (bimodal distribution). This texture consists of dispersed large crystals (porphyroclasts exhibit several microstructures of stress) surrounded by a set of smaller crystals (in different states of recrystallization), according to a typical “core-and-mantle” structure (Fig. 2).

With the focus placed on the individual calcite crystals, the maximum grain size (MGS) varies between 2.4 and 6.5 mm with a median of 2.9 mm, and grain boundary shape (GBS) can be sutured, embayed and sometimes curved. Intracrystalline deformation is variably developed, only present in scattered larger crystals by their deformed twins or by a subtle undulatory extinction. Calcite twins are tabular and thick, although some

8 This terminology, applied to cases where the structure is developed by dynamic recrystallization, replaces the usual “mortar” texture, since this later has a genetic implication as “mechanically crushed rock” and therefore its use is not recommended in this particular case (PASSCHIER, TROUW 2005).

9 According to the proposal of the IUGS Subcommittee on the Systematics of Metamorphic Rocks (FETTES, DESMONS 2011).

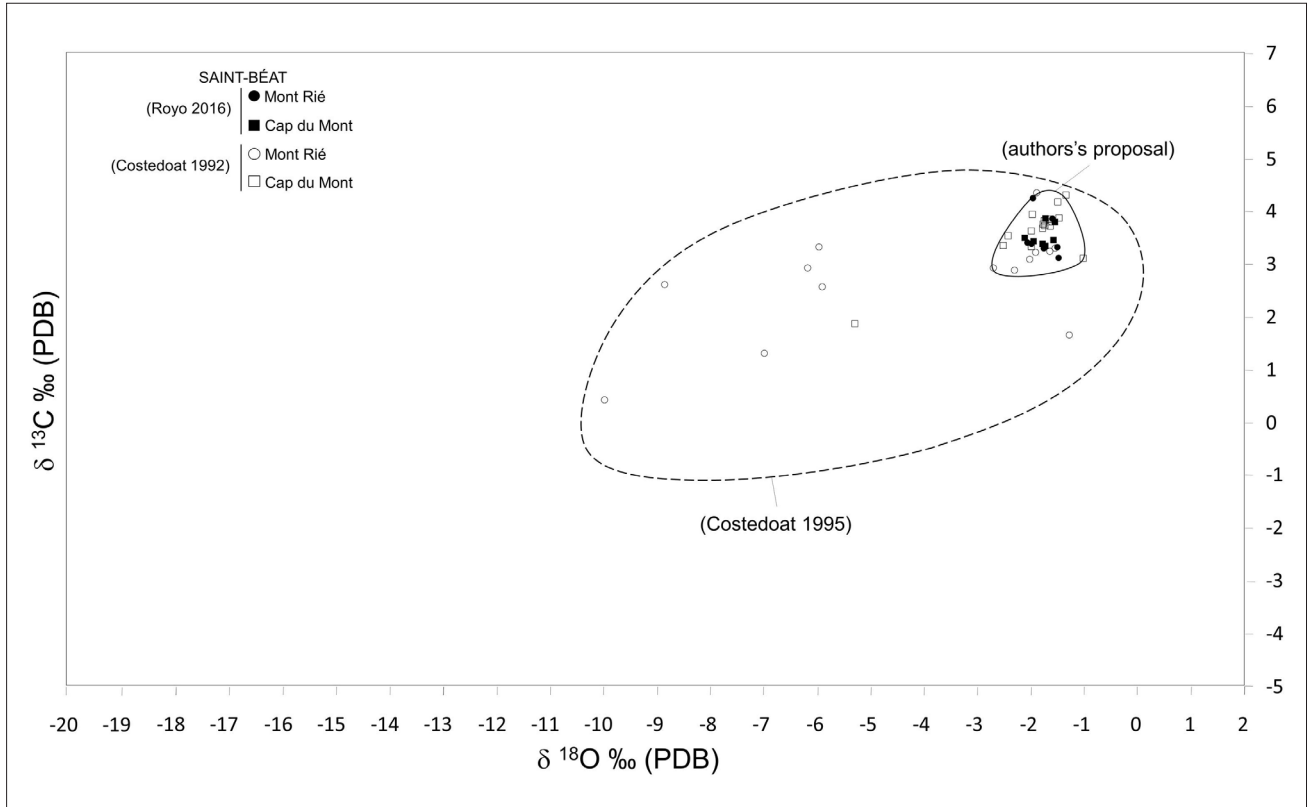


Fig. 3. Dispersion diagram with the specific isotopic field proposal for the coarse-grained white Saint-Béat marble, compared to the previous general Saint-Béat marbles field (COSTEDOAT 1995) and the available $\delta^{13}\text{C}$ and $\delta^{18}\text{O}$ isotopic values (COSTEDOAT 1992; ROYO PLUMED 2016) of samples from Mont Rié (Rapp and Lavigne-Maffone) and Cap du Mont (Château)

crystals show curved and tapered thick twins¹⁰. Differences among samples taken from the different outcrops, cannot be established by fabric, texture or deformation degree.

CL shows a very homogeneous luminescence with faint-medium intensity from dark reddish orange to reddish orange. The percentage of accessory minerals is so slight that its luminescence is not significant. Cap du Mont samples always show a faint CL, while some Mont Rié samples exhibit medium intensity (Fig. 2, MR-LA-3).

The isotopic signature of the coarse-grained white Saint-Béat marble are quite homogeneous, drawing a single cluster in the plot for all the considered quarry fronts. These isotopic data (ROYO PLUMED 2016) are grouped in a relatively small area of the isotopic diagram, within the large Saint-Béat isotopic distribution field previously published (COSTEDOAT 1995)¹¹. In our proposal, this coarse-grained white Saint-Béat isotopic field encloses values from 2.8 to 4.3‰ of $\delta^{13}\text{C}$ and values from -2.7 to -1.0‰ of $\delta^{18}\text{O}$, expressed in PDB units (Fig. 3).

10 Twins type II and III respectively (FERRILL *et al.* 2004).

11 We want express our gratitude to Drs. A. Blanc and Ph. Blanc who facilitated the unpublished isotopic data from Costedoat Ph. D Thesis.

Discriminating from classical and hispanic marbles

Once the coarse-grained white marble from Saint-Béat has been characterised, its comparison with other Classical and Hispanic varieties is needed in order to highlight the parameters that offer the best discrimination. This step has been accomplished applying an identical methodology in our own quarry samples of Classic and Hispanic marbles.

With reference to the visual characteristics or macroscopic petrographic features, the peculiar “rice grain” visual aspect is also quite common in other heteroblastic white marbles, such as some marbles from Prokonnesos, Paros-2(3), Naxos and more rarely from the Estremoz Anticline in Lusitania. However, certain petrographic characteristics are rather specific and help to differentiate this coarse-grained white Saint-Béat variety from most other Classical and Hispanic marbles, especially its texture with bimodal distribution and the MGS (Fig. 4). Additionally when graphite aggregates and especially meionite crystals are present, both are clear parameters that support Saint-Béat marble identification. Only Prokonnesian marble exhibits a similar heteroblastic texture with an average size of MGS (2.5 mm), slightly less than the value determined for Saint-Béat (2.9 mm)

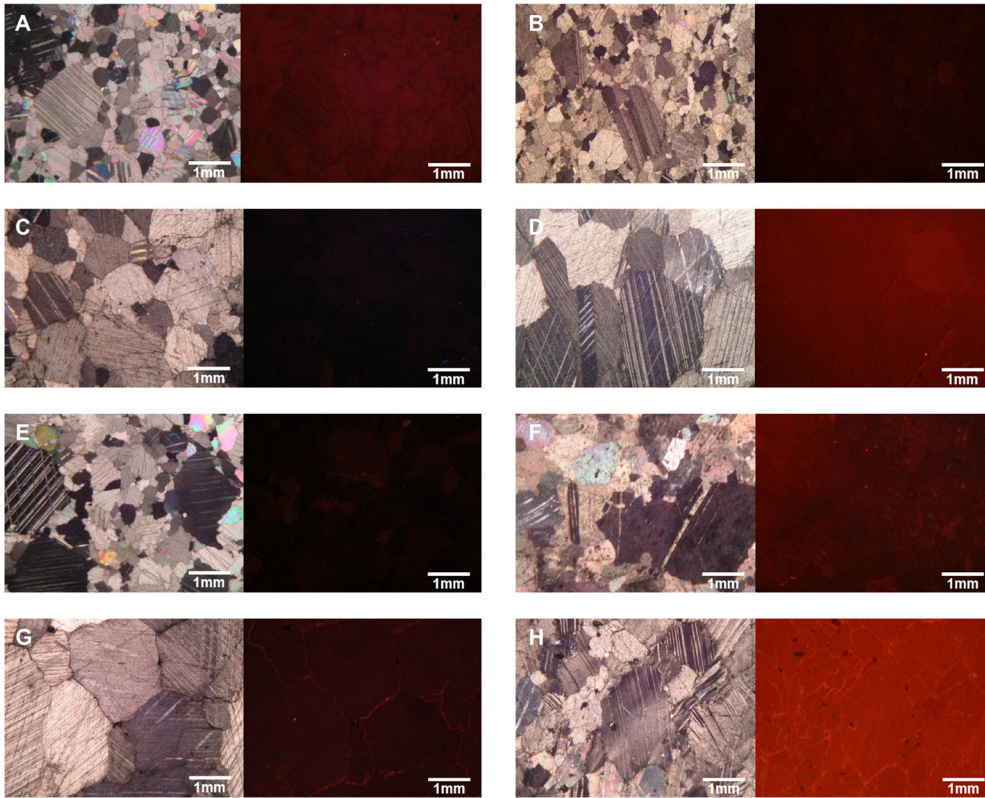


Fig. 4. Pair of photomicrographs with cross polarised light (left) and cathodoluminescence pattern (right) of each of the coarse-grained white marble varieties considered: A-B) Saint-Béat, C) Paros-2(3), D) Naxos, E) Prokonnesos, F) Aphrodisias, G) Estremoz Anticline and H) Almadén de la Plata

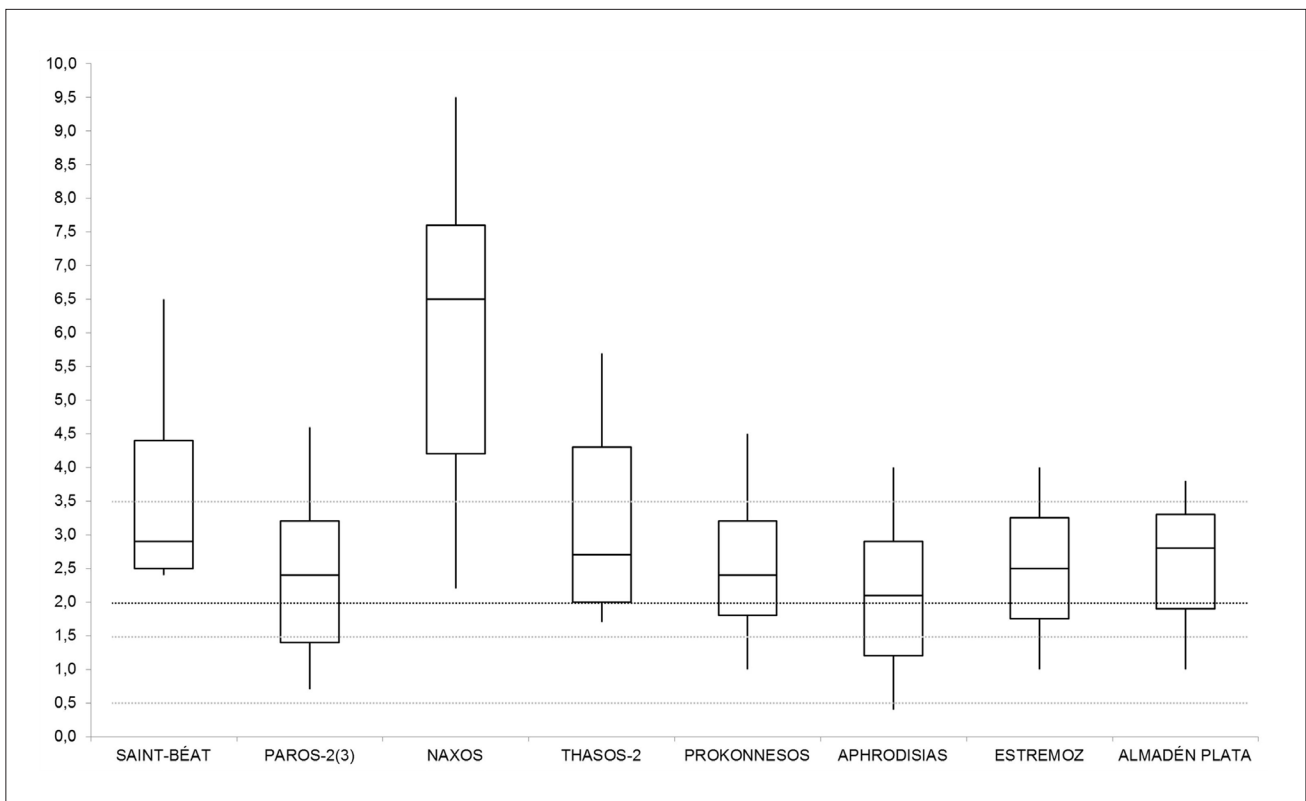


Fig. 5. Box and whisker diagram for the statistical distribution of MGS in the varieties of the coarse-grained white marble considered (LAPUENTE, TURI, BLANC, 2000; GORGONI *et al.* 2002; ATTANASIO, BRILLI, OGLE 2006; ORIGLIA *et al.* 2011; LAPUENTE *et al.* 2014; ROYO PLUMED 2016)

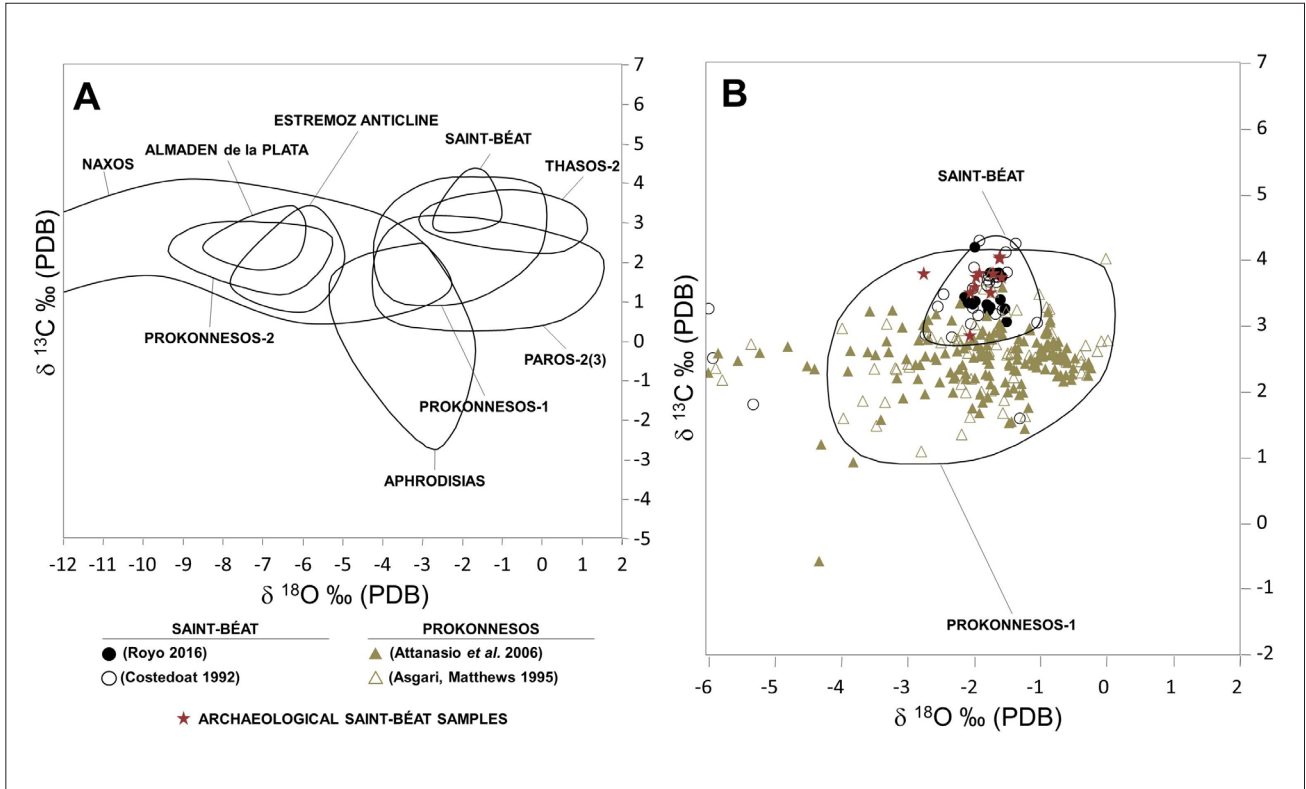


Fig. 6. A) Dispersion diagram with isotopic fields of coarse-grained white marble considered (GORGONI *et al.* 2002; LAPUENTE *et al.* 2014). B) Dispersion diagram with $\delta^{13}\text{C}$ and $\delta^{18}\text{O}$ isotopic values available for varieties of similar petrographic characteristics and overlapping isotopic fields (COSTEDOAT 1992; ASGARI, MATHEWS 1995; ATTANASIO, BRILLI, OGLE 2006; ROYO PLUMED 2016) and values of archaeological samples identified as coarse-grained white Saint-Béat marble in previous papers

(Fig. 5). A parameter with a clear value for the discrimination of Prokonnesos is the extremely faint intensity of its CL, with a dark blue tone. However this feature alone is not useful, for its discrimination from some marbles from Cap du Mont that exhibit a very faint luminescence (Fig. 4). Moreover, the isotopic data of white Saint-Béat fall inside the isotopic fields of several Classical marbles (Fig. 6, A), and especially problematic is its overlap with the Prokonnesian field. However, paying attention to specific values, those of white Saint-Béat are quite well grouped at the top of the isotopic field, helping to separate them from Prokonnesian isotope values (Fig. 6, B).

In order to increase the occasionally difficult discrimination between coarse-grained white Saint-Béat and Prokonnesos an additional method using the spectrophotometer has been tested on 48 white quarry samples from the two districts. Measurements of CIE 1976 $L^*a^*b^*$ colour space coordinates in both modes, the specular reflectance excluded (SCE) and included (SCI), have been simultaneously taken. In the SCE mode, only the diffuse reflectance is measured, producing a colour evaluation which correlates with the way the observer sees the colour of the specimen. When using the SCI mode, both the specular and the diffuse reflectance are taken into account during the measurement process,

whose evaluation provides the total appearance independent of surface conditions. A 3D scatter diagram shows the subtractions between SCI and SCE modes of $L^*a^*b^*$ values, which clearly allows their discrimination (Fig. 7). Although this spectrophotometric method seems to be quite promising, more analyses including archaeological samples must be tested to check its reliability.

Use in Tarraconense archaeological artefacts

At this point, it is appropriate to note that, since 2009, the sequential multi-method approach has been successfully applied to a wide range of Roman artefacts from different archaeological sites of the *Conventus Caesaraugustanus* (Tarraconensis Province) on the southern slope of the Pyrenees. The results of these studies have been steadily published (LAPUENTE, TURI, BLANC 2009; LAPUENTE *et al.* 2011, 2012, 2015; ROYO 2010; ROYO *et al.* 2015, 2016; ANDREU *et al.* 2015). The isotopic values of the archaeological artefacts carved in this material fall inside the updated field with only one exception, which supports our proposal (Fig. 6B). The white coarse-grained Saint-Béat marble has been used in sculpture, *arae*, urns and ornamental elements as slabs and ornate slabs (with a possible pilaster capital among

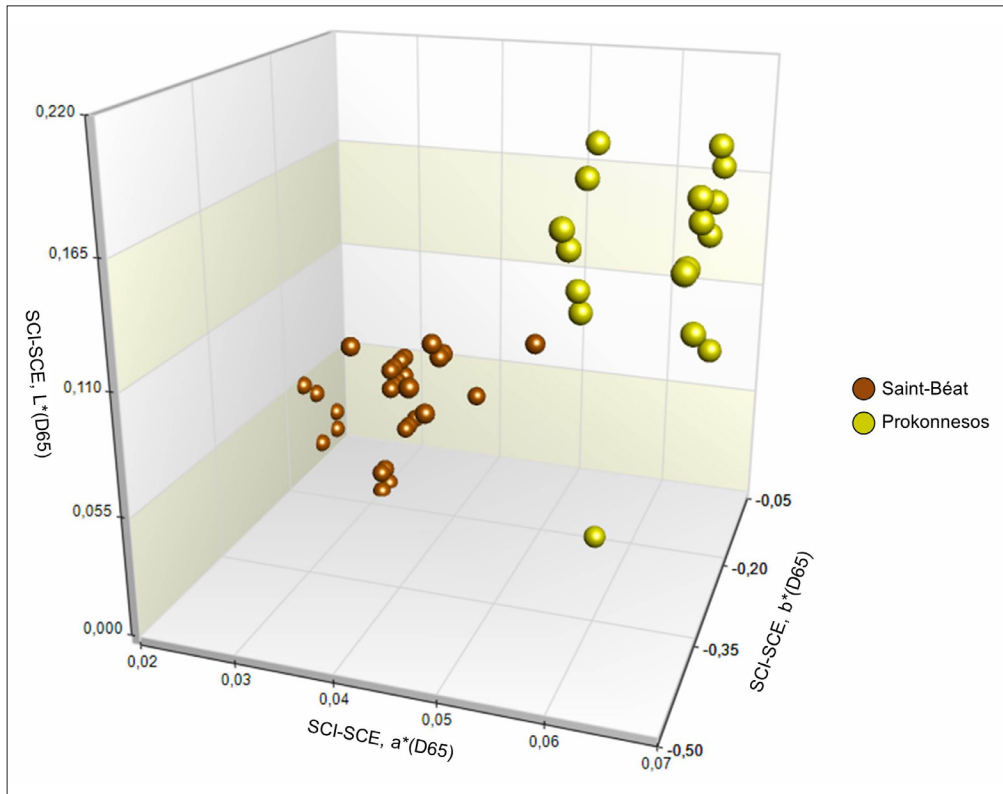


Fig. 7. Diagram with values of the subtractions between SCI and SCE modes for each colour space coordinates (L*a*b*), corresponding to 14 samples of white Saint-Béat marble and 26 samples of white Prokonnesian marble

ARCHAEOLOGICAL SITE	SAMPLE NUMBER	INVENTORY NUMBER	ARTEFACT	CONTEXT	CHRONOLOGY	REFERENCE
Caesar Augusta, Zaragoza (Zaragoza)	05-Z-AA		Togated	Theatre	Early imperial period	Lapuente <i>et al.</i> 2009
	05-Z-AB		Sculpted fragment (rounded)	Theatre	Early imperial period	Lapuente <i>et al.</i> 2009
	05-Z-AC	2931	Sculpted fragment (heel)	Theatre	Early imperial period	Lapuente <i>et al.</i> 2009
	07-Z-CB	98782	Ornamental fragment (acanthus leaf)	Theatre	Early imperial period	Lapuente <i>et al.</i> 2009
"La Sinagoga", Sádaba (Zaragoza)	11-SNG		Slab fragment (9)		Indeterminate	Andreu <i>et al.</i> 2015
	4-SNG		Slab fragment	Terms	Indeterminate	Lapuente <i>et al.</i> 2011
	5-SNG		Slab fragment (edge)	Terms	Indeterminate	Lapuente <i>et al.</i> 2011
	6-SNG		Slab fragment (chip)	Terms	indeterminate	Lapuente <i>et al.</i> 2011
S.Úrbez, Nocito (Huesca)	16-HU	NIG.04133/ /NIG.03543	Head		2 nd cent. AD	Lapuente <i>et al.</i> 2015
Hospital de Benasque (Huesca)	60-HU	1	Ara			Lapuente <i>et al.</i> 2015
S.Esteban, Lleret (Huesca)	1-LL		Ara (with inscription)			Lapuente <i>et al.</i> 2015
	2-LL		Ara			Lapuente <i>et al.</i> 2015
Montcorbau? (Lleida)	2-ART		Urn front		2 nd -3 rd cent. AD	Royo <i>et al.</i> 2015
Rectoría, Gausac (Lleida)	4-ART		Urn front		Mid-3 rd cent. AD	Royo <i>et al.</i> 2015
	5-ART	Inv.497	Urn front or Stele		2 nd -3 rd cent. AD	Royo <i>et al.</i> 2015

Fig. 8. Data collection of Roman artefacts made of coarse-grained white Saint-Béat, found in archaeological sites of *Tarraconensis* Province that have been published by this group and collaborators

them). Taken together they allow the deduction of a chronological interval of use from the mid-1st century AD until at least the mid-3rd century AD (Fig. 8).

Conclusions

The multi-method approach applied to coarse-grained white Saint-Béat marble allows us to verify the homogeneity of their petrographic and isotopic parameters, even in samples taken from different outcrops in the Saint-Béat district. Its particular metamorphic history based on dynamic recrystallisation processes affords its own petrographic characteristics, which are the “core-and-mantle” structure, the particular “rice grain” heteroblastic texture, the CL-pattern and the presence of accessory graphite and meionite which are identifying fingerprints.

Therefore, all of them allow a reliable discrimination from other Classical and Hispanic marbles of similar coarse grain features. In this sense, this studied Saint-Béat marble is easy to discriminate from most of the varieties that potentially may have been used together in Roman times. Rarely does the natural variability of certain petrographic features of an inequigranular marble result in confusions with other inequigranular varieties as Paros-2 and some Estremoz Anticline marbles. These confusions are solved by taking into consideration the sequential approach followed in this study. More complicated is its discrimination from Prokonnesian marble, whose parameters are quite similar. Some ways to differentiate the two marbles are being searched with the application of other techniques. The attempt based on the subtractions between SCI and SCE modes of $L^*a^*b^*$ values seems to offer promising results. The potential of this discriminant parameter obtained with a non-destructive method should be reinforced with measurements in other marble sources, but at the moment it seems to be quite successful.

Coarse-grained white Saint-Béat was used with diverse purposes and had a wide distribution in the *Tarraconensis* Province. Furthermore, it was employed together with the most important Roman marbles. All of these facts underline its importance in the western part of the Roman Empire, but also they raise new questions as to why this marble was used and no other, how much marble was used, what the transportation routes were, what motivated the beginning of export to the *Hispania Tarraconensis* Province and what caused the end of it. These questions must be analysed in the light of the studies recently accomplished (ROYO PLUMED 2016) in this same territory showing the presence of other Pyrenean marbles.

ACKNOWLEDGEMENTS

This research was carried out within the framework of the HAR2008-04600, HAR2011-25011 and HAR2015-65319-P Spanish Government Projects (MICINN-FEDER). The Research group E-95 of Zaragoza University is grateful to the Aragon Government and the European Social Fund for financial support as part of a FPI Doctoral Fellowship Programme. We are sincerely grateful for the recommendations and the necessary corrections made by the anonymous referees to improve this paper.

REFERENCES

- ANDREU PINTADO J., ROYO PLUMED H., LAPUENTE P., BRILLI M. 2015: “Imported marbles found in three roman cities of the territory of “Cinco Villas” (Zaragoza), North of *Hispania Citerior*”, in *ASMOSIA X*, 13-22.
- ASGARI N., MATTHEWS K. J. 1995: “The stable isotope analysis of marble from Proconnesus”, in *ASMOSIA III*, 123-129.
- ATTANASIO D., BRILLI M., OGLE N. 2006: The isotopic signature of classical marbles, *Studia Archaeologica*, 145, “L’Érma” di Bretschneider, Roma.
- BARBIN V., RAMSEYER K., DÉCROUEZ D., HERB R. 1989: “Marbres blancs: caractérisation par cathodoluminescence”, *Comptes Rendus de l’Académie des Sciences Paris*, t. 308, série II, 861-866.
- BARBIN V., RAMSEYER K., DÉCROUEZ D., BURNS S. J., CHAMAY J., MAIER J. L. 1992: “Cathodoluminescence of white marbles: an overview”, *Archaeometry* 34, 175-183.
- BESSAC J. C., SABLAYROLLES R. 2002: “Problématique archéologique des carrières antiques en Gaule”, *Gallia* 59, 3-9.
- BLANC PH. 1995: “Caractérisation des marbres blancs par cathodoluminescence”, in J. CABANOT, R. SABLAYROLLES, J.-L. SCHENCK (eds.): *Les marbres blancs des Pyrénées: Approches historiques et scientifiques (actes du colloque, 14-16 octobre 1993)*. *Entretiens d’Archéologie et d’Histoire*, vol. 2, Musée archéologique départemental de Saint-Bertrand-de-Comminges, Saint-Bertrand-de-Comminges, 249-254.
- BLANC A., BLANC PH. 2012: “Ancient uses of the Roman Breccia (Brèche des Romains) in Gaul”, in *ASMOSIA IX*, 487-492.
- COSTEDOAT CH. 1992: *Essai de caractérisation des marbres blancs pyrénéens par des méthodes physiques. Application en architecture et en archéologie*, Thèse de doctorat en Géologie, Université Bordeaux-I, 147, 1 vol. d’annexes.

- COSTEDOAT CH. 1995: "Recherches sur les marbres pyrénéens", in J. CABANOT, R. SABLAYROLLES, J.-L. SCHENK (eds.): *Les marbres blancs des Pyrénées: Approches historiques et scientifiques* (actes du colloque, 14-16 octobre 1993). *Entretiens d'Archéologie et d'Histoire*, vol. 2, Musée archéologique départemental de Saint-Bertrand-de-Comminges, Saint-Bertrand-de-Comminges, 101-118.
- FABRE J.-M., SABLAYROLLES R. 1995: "Le dieu Eriape et les isotopes stables: le marbre des Pyrénées entre terrain et laboratoire", in J. CABANOT, R. SABLAYROLLES, J.-L. SCHENK (eds.): *Les marbres blancs des Pyrénées: Approches historiques et scientifiques* (actes du colloque, 14-16 octobre 1993). *Entretiens d'Archéologie et d'Histoire*, vol. 2, Musée archéologique départemental de Saint-Bertrand-de-Comminges, Saint-Bertrand-de-Comminges, 131-168.
- FERRILL D. A., MORRIS A. P., EVANS M. A., BURKHARD M., GROSHONG JR. R. H., ONASCH C. M. 2004: "Calcite twin morphology: a low-temperature deformation geothermometer", *Journal of Structural Geology* Acta 26, 1521-1529.
- FETTES D., DESMONS J. (eds.) 2011: *Metamorphic rocks: a classification and glossary of terms: recommendations of the International Union of Geological Sciences Subcommittee on the Systematics of Metamorphic Rocks*, Cambridge University Press, Cambridge.
- GISBERT J., GASPAS S. 2004: "Geología y procedencia de los marmora", in M. BELTRÁN LLORÍS, J. A. PAZ PERALTA (coord.): *Las aguas sagradas del Municipium Turiaso, Caesaraugusta 76*, 345-360.
- GORGONI C., LAZZARINI L., PALLANTE P., TURI B. 2002: "An updated and detailed mineropetrographic and C-O stable isotopic reference database for the main Mediterranean marbles used in antiquity", in *ASMOSIA V*, 115-131.
- LAPUENTE P., CUCHÍ J. A., ROYO H., PREITE-MARTINEZ M., BLANC PH., GARCÉS C. 2012: "Study of provenance of the Roman sarcophagus known today as the tomb of King Ramiro II of Aragon", in *ASMOSIA IX*, 419-425.
- LAPUENTE P., NOGALES-BASARRATE T., ROYO H., BRILLI M. 2014: "White marble sculptures from the National Museum of Roman Art (Mérida, Spain): sources of local and imported marbles", *European Journal of Mineralogy* 26, 333-354.
- LAPUENTE P., NOGALES-BASARRATE T., ROYO H., BRILLI M., SAVIN M.-C.: "Grey and greyish banded marbles from the Estremoz Anticline in Lusitania", [in this volume].
- LAPUENTE MERCADAL M. P., ROYO PLUMED H., BRILLI M., CUCHÍ J. A. 2016: "Mármoles escultóricos romanos del patrimonio de Aragón. Nuevas aportaciones arqueométricas", in J. I. LORENZO LIZALDE, J. M. RODANÉS VICENTE (eds.): *Actas del I Congreso de Arqueología y Patrimonio Aragonés - CAPA, Colegio Oficial de Doctores y Licenciados en Filosofía y Letras y en Ciencias de Aragón, Zaragoza*, 559-568.
- LAPUENTE P., ROYO H., CUCHÍ J. A., JUSTES J., PREITE-MARTINEZ M. 2015: "Local stones and marbles found in the territory of 'Alto Aragon' (Hispania) in Roman Times", in *ASMOSIA X*, 183-192.
- LAPUENTE P., ROYO H., GUTIÉRREZ GARCÍA-MORENO A. 2011: "Un aspecto de la monumentalización de Los Bañales: caracterización de materiales pétreos y fuentes de aprovisionamiento", in J. ANDREU PINTADO (ed.): *Caesaraugusta 82. La ciudad romana de los Bañales (Uncastillo, Zaragoza): entre la historia, la arqueología y la historiografía*, Institución "Fernando el Católico". Diputación de Zaragoza, Zaragoza, 261-286.
- LAPUENTE P., TURI B., BLANC PH. 2000: "Marbles from Roman Hispania: stable isotope and cathodoluminescence characterization", *Applied Geochemistry* 15, 1469-1493.
- LAPUENTE P., TURI B., BLANC PH. 2009: "Marbles and coloured stones from the Theatre of Caesaraugusta (Hispania): Preliminary study", in *ASMOSIA VII*, 509-521.
- MAUGAN-CHEMIN V. 2006. "Les couleurs du marbre chez Pline l'Ancien, Martial et Stace", in A. ROUVERET, S. DUBEL, V. NAAS (eds.): *Couleurs et matières dans l'Antiquité: textes, techniques et pratiques*. Éditions Rue d'Ulm, DL 2006, Paris, 103-125.
- MC CREA J. M. 1950: "On the isotopic chemistry of carbonates and a paleotemperature scale", *Journal of Chemical Physics* 18, 849-857.
- NOGALES-BASARRATE T., LAPUENTE P., RODÀ I. 2017. "Dos nuevos retratos de Caesar Augusta (Zaragoza)", in *Actes XIV Colloque International sur l'Art Provincial Romain*. June 2015, Dijon, France. *Iconographie du quotidien dans l'art provincial romain: Modèles régionaux*, 44e suppl. à la *Revue Archéologique de l'Est*, 261-270.
- ORIGILA F., GLIOZZO E., MECCHERI M., SPANGENBERG J. E., TURBANTI MEMMI I., PAPI E. 2011: "Mineralogical, petrographic and geochemical characterisation of white and coloured Iberian marbles in the context of the provenancing of some artefacts from Thamusida (Kenitra, Morocco)", *European Journal of Mineralogy* 23, 857-869.

- PASSCHIER C.W., TROUW R.A.J. 2005: *Microtectonics*, Springer, Berlin, 371.
- ROYO H. 2010: "Estudio arqueométrico de tres piezas pétreas de Campo Real/Fillera (Sos del Rey Católico/Sangüesa)", *Zephyrus* 65, 199-203.
- ROYO PLUMED H. 2016: *Mármoles de la Cordillera Pirenaica: afloramientos norpirenaicos y asociados al "Nappe des Marbres". Caracterización y uso en época romana*, unpublished Ph. D Thesis, Universidad de Zaragoza, Zaragoza.
- ROYO PLUMED H., CUCHÍ OTERINO J. A., ALAGÓN CASTÁN A., LAPUENTE MERCADAL P., BRILLI M. 2016: "Estudio arqueométrico de un conjunto romano de placas de mármol halladas en un solar de Osca", in J. I. LORENZO LIZALDE, J. M. RODANÉS VICENTE (eds.): *Actas del I Congreso de Arqueología y Patrimonio Aragonés - CAPA, Colegio Oficial de Doctores y Licenciados en Filosofía y Letras y en Ciencias de Aragón*, Zaragoza, 585-591.
- ROYO H., LAPUENTE P., ROSE E., PREITE-MARTINEZ M., CUCHÍ J. A. 2015: "Discriminating criteria of Pyrenean Arties marble (Aran Valley, Catalonia) from Saint-Béat marbles: evidence of Roman use", in *ASMOSIA X*, 613-622.
- SAPÈNE B. 1946: "Autels votifs, atelier de marbriers et sanctuaire gallo-romains découverts à Saint-Béat (Haute-Garonne) en 1946", *Revue de Comminges* 59, 4, 283-325.